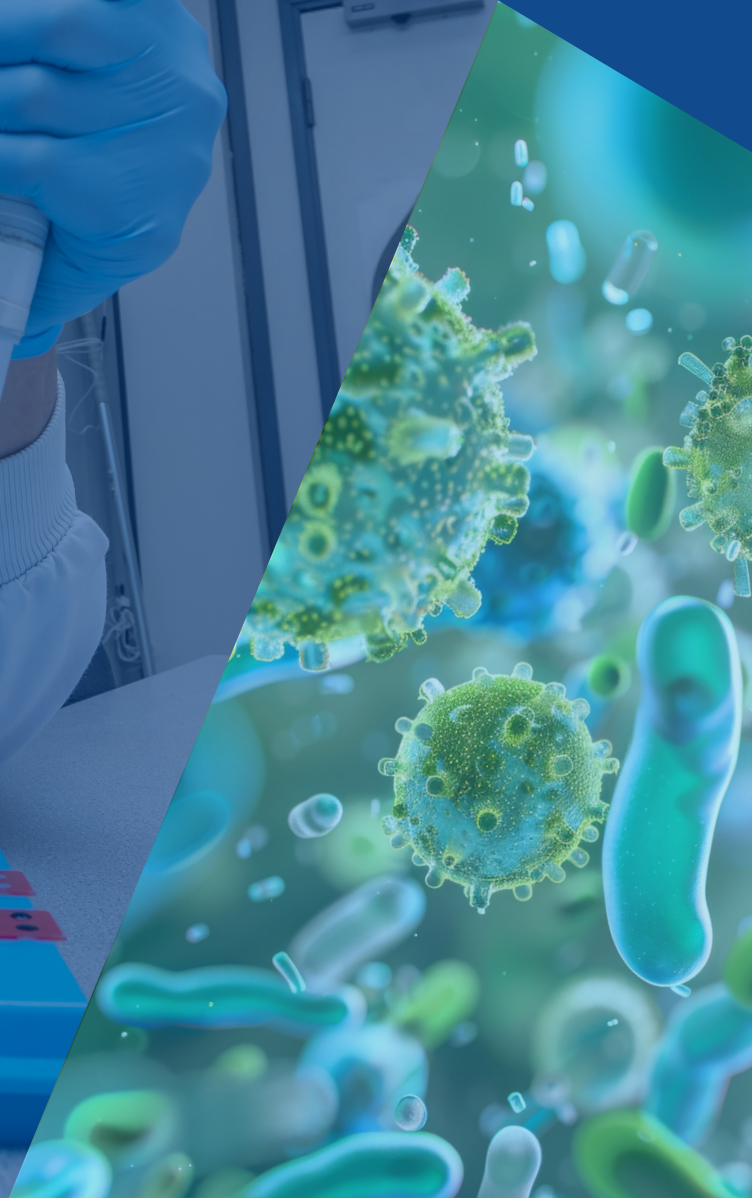


biobest

2025

Price List



Contents

Biobest - Avoiding Delays.....	3
Biobest Team.....	4
Biobest Services.....	6
Mailing Guidelines.....	7
Farm Animals.....	
Bovine Diagnostics.....	8
Ovine Diagnostics.....	9
Porcine Diagnostics.....	9
Ruminant Clinical Pathology.....	10
Laboratory Supplies and Extras.....	13
Health Schemes.....	
HiHealthHerdcare.....	14
HiHealthFlockcare.....	15
Guidelines to achieving herd accreditation.....	16
Companion Animals.....	
Feline Diagnostics.....	18
Canine Diagnostics.....	20
Equine Diagnostics.....	21
Avian.....	21
Lyme Disease PCR.....	21
Companion Animal Clinical Pathology.....	22
Stem Cell Therapy.....	23
Instructions for Sending Samples	24
Terms & Conditions.....	26
Contact Us.....	28

About Biobest

Welcome to the 2025 Biobest Price List and Brochure. This year we are proud to celebrate 30 years of trading, marking three decades of dedication to quality, innovation, and exceptional customer service. Biobest began as a specialist referral laboratory with a focus on virology, and over the years, we have evolved into a leading provider of comprehensive veterinary laboratory services.

Our commitment to advancing veterinary diagnostics has led to significant investment in laboratory automation and robotics, enabling us to continually enhance efficiency and the value we deliver to our customers.

In addition to core diagnostic services, our expertise and rigorous quality standards allow us to provide bespoke contract research services, including vaccine safety and efficacy studies, disinfectant trials, compost validations, and GMP testing for both human and veterinary medicinal products.

Over the past 20 years, we have also pioneered stem cell services. As the first VMD-approved Equine Stem Cell Centre, we initially focused on autologous stem cell products for the equine industry. Today, we proudly offer expanded services for canine and feline patients, with our skilled veterinarians and cell scientists always on hand to explore new cases and applications.



Checklist For Avoiding Delays

In order to ensure that your samples are tested efficiently, you should aim to have them delivered to us the day before tests are set up. We will always aim to provide a quick turnaround time for all samples, but if you have a specific urgent case please contact us directly to discuss your requirements.

There are a few simple steps you can take when submitting samples to ensure that they are tested as quickly as possible and allow us to provide you with the best possible customer service:

- Ensure that submission forms are completed in full.
- Ensure you have clearly indicated what testing is required for every sample submitted.
- For farm animal samples remember to include the animal ID(s) and the farmer's name on the submission form. We can supply sample labels and pre-populated submission forms for cattle health scheme members who have granted us CTS access or nominated us as a ScotMoves agent.
- Where relevant, include a concise clinical history to assist our vets when writing reports.
- For tissue, swab, cytology smears and fluid, please include details of the sampling site.
- It is important that you send the correct sample type and sufficient volume for your chosen test(s).
- Please ensure that the lids of all sample tubes and pots are leakproof and firmly closed.
- Do not send faecal samples in plastic bags or gloves, instead use rigid plastic pots.
- When sending a large number of samples try to ensure tubes are in numerical order.

DISCLAIMER - All standard testing days subject to change without prior notice. Turnaround times may increase as a result of problems with tests or samples.

The Biobest team have strong and varied academic and technical experience, as well as enthusiasm for delivering the best for our customers. We offer our unique blend of expertise in virology and molecular testing with commercial dynamism and excellent customer service.



Paul Burr BSc(VetSci)Hons BVM&S PhD MRCVS - Laboratory Director

Paul has 5 years experience of farm practice, followed by over 20 years of diagnosis and research in infectious diseases. Advising both vets and farmers on infectious disease problems and health scheme operation remains an important and enjoyable part of his role at Biobest. Paul has regularly presented papers at British Cattle Veterinary Association meetings and often does talks to vets and farmer meetings on infectious disease.



Stuart Marshall BSc (Hons) MBA - Chief Operations Officer

Stuart graduated from the University of Edinburgh with an honours degree in Virology in 1998. He joined Biobest in 1999 following a 12-month placement with the IBR research team at the Moredun Research Institute. Stuart also has an MBA from the University of Warwick where his thesis was on the use of lean manufacturing techniques within the laboratory environment. In his role as Chief Operations Officer of the Biobest lab group Stuart has day-to-day management responsibility for all the Biobest lab sites.



Susan Duthie BVM&S PhD CertVR MRCVS - Veterinary Manager

Susan graduated from the University of Glasgow Vet School and went straight into mixed practice. Five years later, she returned to Glasgow to complete a PhD encompassing veterinary virology. After completing a related post-doctoral study, she joined Biobest in 2003. Susan has daily involvement with the HiHealth Herdcare Cattle Health Scheme, providing reports and advice for members, and is a member of the CHcCS Technical group.



Jennifer Bunyan BSc (Hons) Cert Mgmt (Open) - Laboratory Manager

After graduating with an honours degree in Neuroscience from the University of Edinburgh, Jennifer started with Biobest in 2001. Since then Jennifer has progressed within the company to Laboratory Manager overseeing a team of 22 scientists and technicians. In 2010 she also obtained an Open University professional certificate in management winning the Derek Pugh award for best student. At Biobest she takes responsibility for all aspects of laboratory management to ensure we provide our customers with the highest possible standards of testing in an efficient and timely fashion.



Maggie Carson BSc - Farm Animal Manager

Maggie joined Biobest in 2014 as the bovine administrator for the HiHealth Herdcare team. She was promoted to Deputy Farm Animal Manager in 2016 and subsequently to Farm Animal Manager in 2019. A University of Edinburgh chemistry graduate, she spent a few summers working and travelling in America before taking on her role here at Biobest. Maggie is responsible for the day-to-day management of bovine testing; writing reports and preparing accreditation and sales certificates. She also plays an active role in advising new and current members.



Karen Johnston Bsc MBE - Deputy Cattle Health Scheme Manager

Karen joined the Biobest team in 2011 when HiHealth and Herdcare merged to form HiHealth Herdcare and has been working from the Orkney office based within Orkney Auction Mart since 2001. As well as being secretary of Orkney Livestock Association she is Deputy Cattle Health Scheme Manager of HiHealth Herdcare. Karen was awarded an MBE in 2011 for services to farming. Her main roles include scheme promotion, member support and livestock sales.



Lucy Fletcher BVetMed MRCVS - Veterinary Advisor

Lucy graduated from the Royal Veterinary College and since has worked solely in farm animal practice, mostly in the South West of England then locuming around Scotland and New Zealand. She joined the Biobest team in 2023 to pursue her interest in infectious disease control. Lucy's role is mainly advising vets and farmers and reporting results.



Emily Anderson BVM&S MVetSci MRCVS - Veterinary Advisor

Emily joined the Biobest veterinary team at the start of 2021. Her role includes reporting and providing veterinary support to submitting vets and health scheme members. She graduated in 2006 from the Royal (Dick) Vet School and has subsequently worked in mixed practice in Aberdeenshire, the Scottish Borders and New South Wales, Australia. She has also undertaken voluntary veterinary work with charities in Thailand, Fiji and the Cook Islands. Most recently she returned to Edinburgh to complete a research Masters on bovine TB.



Claire Pearson BVetMed MRCVS - Veterinary Advisor

Claire joined the Biobest veterinary team at the start of 2021. She graduated from the Royal Veterinary College in 1999 and worked in mixed practice for a number of years before moving on to small animal practice. She has worked in charity and private sectors around the UK. Claire is excited to be a part of a team dedicated to improving the health and welfare of farm animals. Claire's roles at Biobest include reporting and providing veterinary support to submitting vets and health scheme members.



Heather Nicholls BVM&S BVSc CertAVP MRCVS - Veterinary Advisor

Heather graduated from the University of Edinburgh (Royal Dick) Vet School in 2012, completing an Honours degree in Infectious Diseases as part of her studies. After gaining a broad range of clinical experience in equine, small animal and farm animal practice in different regions of the UK, she decided to return to her interest in infectious diseases and joined the Biobest team in 2021. Heather provides reports and advice to vets and farmers including members of HiHealth Herdcare.



Victoria Enoch BVM&S CertAVP MRCVS - Veterinary Advisor

After graduating from Edinburgh in 2005, Vicky began her veterinary career in mixed practice before moving into small animal and gaining her certificate in advanced veterinary practice. She has worked in both private and charity sectors and was involved in undergraduate teaching at the Royal (Dick) School of Veterinary Studies for several years. Vicky joined Biobest in summer 2021 as a Veterinary Advisor and her responsibilities include reporting results and providing advice to both vets and farmers.

biobest

Supplying specialist contract research and laboratory support services in infectious diseases, clinical pathology and cell culture.

Working with the major pharmaceutical companies and contract research organisations to complete non-regulatory research studies.

Additional activities include disinfectant testing and virological reagent sales.

We hold a GMP Test Site (Biologicals) certificate from the MHRA. This means that we are authorised to perform biological QC testing in accordance with Article 111(1) of directive 2001/83/EC.

biobest diagnostics

Providing testing services for a wide range of species including cattle, sheep, goats, dogs, cats, horses, pigs, birds, poultry and fish, with a particular emphasis on virology, DNA testing and serology. As a specialist laboratory we have the skills to develop and use the best available assay technology.

Biobest gives you:

- The best available diagnostic test
- Expert interpretation on all test results
- Fast and efficient service
- The best prices

biobest clinpath LABORATORY SERVICES

Providing a comprehensive service for all species covering haematology, biochemistry, cytology, histopathology, parasitology and bacteriology.

Biobest ClinPath is an independent, client-orientated quality service providing:

- Analytical accuracy, speed and reliability
- Access to a veterinarian to discuss cases
- Result interpretation
- Provision of information rich, jargon free reports
- Flexibility to suit individual practice needs
- Value for money

hihealth herdcare

A leading CHECS accredited cattle health scheme provider. HiHealth Herdcare is a partnership with the farmer, their practice vet and the cattle team at Biobest. Together we can work within the guidelines of CHECS to help you:

- Eliminate BVD, Johne's, IBR, Lepto and Neospora from your herd and obtain accreditation
- Improve biosecurity on your farm and prevent reintroduction of the five diseases into your herd
- Help you identify accredited sources of breeding cattle

hihealth flockcare

A flexible membership plan helping you to get the most out of lab diagnostics for your sheep. Members receive expert advice and discounted testing in the following areas to improve flock health and productivity:

- Parasitology
- Clinical chemistry including trace elements
- Infectious disease testing

Testing can be used to monitor flock status and to investigate common problems such as barren ewes, thin ewes, ill thrift in lambs and worm and fluke control.

The team at Biobest work with farmers and their own vet to provide guidance and advice.



Royal Mail should accept all samples for routine diagnostic testing. Royal Mail do not accept Category A infectious material, but this should not affect routine veterinary samples. General guidance is that samples (blood, tissue, excreta, secreta etc.) from humans or animal are considered to be Category B infectious substances. These samples are then assigned to UN3373 and must be packaged according to IATA PI:650 for transport. There is an added complication that for Category B samples each individual package must hold a total of less than 50ml of liquid or 50g of tissue.

Samples which are taken for routine screening from healthy animals are exempt from UN3373. Specimens for which there is minimal likelihood that pathogens are present are not subject to the regulations (meaning volumes over 50ml/50g can be sent) if the sample is sent in a manner which will prevent any leakage and which is marked with the words “Exempt animal specimen” or “Exempt human specimen” as appropriate.

Please ensure all samples arrive the day before the test is scheduled to be set up.

Check our ‘Sending Samples’ guide on p24-25. Incorrectly packaged samples could result in an increased Health and Safety risk to our staff and/or cause additional time and cost in processing. We reserve the right to add an additional charge to cover these costs.

Farm Animal Tests

Bovine

Cattle	Sample Requirements	Testing Days	Turnaround	Price (£)	Code
Antibody assays					
(Most tests can be done on serum, milk or bulk milk. Please call for details)					
BVD ELISA	Serum	Mon, Wed, Fri	Up to 3 days	5.30	AG-BVDS
	Bulk/Individual Milk	Mon	Up to 7 days	6.60	BVDS_MLK
Johne's ELISA	Serum	Mon, Wed, Fri	Up to 3 days	6.60	AG-JOH-IX
	Bulk/Individual Milk	Mon	Up to 7 days	6.05 (30+)	JOH_30
				7.00	JOHNES_MLK
			6.60 (30+)	JOH_30_MLK	
Leptospira hardjo ELISA	Serum	Tues, Thurs	Up to 4 days	7.70	AG-LEPS-LN
	Bulk/Individual Milk	Tues	Up to 7 days	8.10	LEPTOS_BM
IBR ELISA	Serum	Mon, Wed, Fri	Up to 3 days	7.30	AG-IBRS
	Bulk/Individual Milk	Mon	Up to 7 days	7.30	IBRS
IBR gE marker ELISA	Serum	Tues	Up to 7 days	10.50	IBR_GE_SRM
	Bulk/Individual Milk	Tues	Up to 7 days	21.00	IBR_GE_MLK
Neospora caninum ELISA	Serum	Thurs	Up to 7 days	9.90	NEO_ELISA
	Bulk/Individual Milk	Thurs	Up to 7 days	9.00 (40+) 13.20	NEO_40 NEO_MLK
Fasciola hepatica (Liver Fluke) ELISA	Serum	Thurs	Up to 7 days	10.50	B_FLUKE
	Bulk/Individual Milk	Thurs	Up to 7 days	8.50 (10+) 10.60	B_FLUKE_BM
Salmonella ELISA	Serum	Fri	Up to 7 days	18.00	SALM_ELISA
	Bulk/Individual Milk	Fri	Up to 7 days	18.00	
RSV ELISA	Serum	Tues	Up to 7 days	12.00	RSVS
PI3 ELISA	Serum	Tues	Up to 7 days	12.00	PI3S
Mycoplasma bovis ELISA	Serum	Tues	Up to 7 days	12.50	M_BOVIS
	Bulk/Individual Milk	Tues	Up to 7 days	12.50	
Total IgG	Serum	As requested	Up to 7 days	60.00	TOTAL_IGG
	Individual Milk/Colostrum			75.00	TOTAL_MLK
Rotavirus serology	Colostrum or Individual Milk	As requested	Up to 10 days	125.00	RVS
Coronavirus serology	Colostrum or Individual Milk	As requested	Up to 10 days	125.00	B_CSV
Rotavirus/coronavirus combined	Colostrum or Individual Milk only	As requested	Up to 10 days	240.00	RVS_CSV
Ostertagia ostertagi ELISA	Serum	Tues	Up to 7 days	21.00	OSTERTAG
	Bulk/Individual Milk	Tues	Up to 7 days	21.00	
Q Fever	Serum	Thurs fortnightly	Up to 14 days	16.00	QFEVER
Schmallenberg	Serum	As requested	Up to 7 days	12.00	SBV001
	Bulk/Individual Milk			12.00	SBV002
IBR or BVD VNT	Serum (minimum of 5 samples)	As requested	On demand	POA	IBR_VNT BVD_VNT
Antigen detection					
BVD antigen*	Serum or Ear tissue	Wed, Fri	Up to 4 days	8.50	BVDV
Fluke coproantigen ELISA*	5g faeces	Thurs	Up to 7 days	20.00	F_COPRO_BV
	Pool Faeces (up to 10 samples)			40.00	F_COPRO_PL

*Please note these samples need to be prepared for testing in advance and as such must arrive at Biobest at least 1 day prior to the official test day.

Bovine

Cattle	Sample Requirements	Testing Days	Turnaround	Price (£)	Code
PCR					
Johne's* Pool	>20g faeces	Wed	Up to 7 days	42.50	JOHNES_PCR
	Faeces (5 samples)			52.00	JOH_PCR_PF
BVD Individual*	Serum (Lithium heparin cannot be used)	Tues, Thurs	Up to 5 days	32.00	BVD_PCR
	Bulk milk (semen/tissue on request)			42.00	BVD_PCR_BM
BVD Tag and Test*	Ear tissue	Tues, Thurs	Up to 5 days	9.40	BVD_PCR004
BVD Test only *	Ear tissue	Tues, Thurs	Up to 5 days	6.00	BVD_PCR004
BVD Pool*	Serum (up to 10 samples)	Tues, Thurs	Up to 5 days	46.00	BVD_PCR003
Bactoproof™ mastitis PCR* Detects 16 pathogens, see website for further details	Preserved milk (bronopol preservative advised)	Thurs	Up to 7 days	77.00	MAST-16
Respiratory PCR (see p25)	Individual swab	Thurs	Up to 7 days	80.00	RESP_PCR
Respiratory PCR (see p25)	Individual BAL or tissue	Thurs	Up to 7 days	100.00	RESP_BAL
Respiratory PCR (see p25)	Pool of up to 5 samples - must be same sample type	Thurs	Up to 7 days	105.00	RESP_POOL
Leptospirosis PCR*	Tissue, EDTA blood or urine	Tues	Up to 7 days	88.00	LEPTOS_PCR
MCF PCR	Heparin, EDTA or tissue	As requested	Up to 10 days	41.25	MCF_PCR

Ovine

Sheep	Sample Requirements	Testing Days	Turnaround	Price (£)	Code
Serology					
MV/CAE	Serum	Tues	Up to 7 days	11.50	MV_CAЕ
CLA ELISA	Serum	Tues (fortnightly)	Up to 15 days	12.25	CLA
EAE (C. abortus) ELISA	Serum	Fri	Up to 7 days	13.00	EAE
Toxo ELISA	Serum	As requested	Up to 7 days	13.00	OV_TOXO
Johne's disease ELISA	Serum	Mon, Wed, Fri	Up to 3 days	6.60	AG-JOH-IX
				6.05 (30+)	JOHNES_30
	Bulk Milk	Mon	Up to 7 days	7.00	JOHNES_MLK
Sheep Scab ELISA	Serum	Thurs	Up to 7 days	6.60 (30+)	JOH_30_MLK
				14.00	SCAB_OVINE
				11.50 (2-11)	SCAB_OV_11
Fasciola hepatica (Liver Fluke) ELISA	Serum Bulk/Individual Milk	Thurs	Up to 7 days	10.00 (12+)	SCAB_OV_12
				10.50	B_FLUKE
				10.60	B_FLUKE_BM
Border disease ELISA	Serum	As requested	Up to 7 days	12.70	BDV
				12.00 (10+)	BDV_10
Schmallenberg	Serum or Bulk/Individual Milk	As requested	Up to 7 days	12.00	SBV003
					SBV004
Teladorsagia circumcincta IgA ELISA	Serum	As requested	On demand	POA	T-CIRC_L4
Pathogen Detection					
Fluke coproantigen ELISA*	2g faeces	Thurs	Up to 7 days	20.00	F_COPRO_OV
	Pool Faeces (up to 10 samples)			40.00	F_COPRO_PL
Border disease PCR*	Serum	Tues, Thurs	Up to 5 days	32.00	BDV_PCR
	Pool Serum (up to 10 samples)			48.00	BDV_POOL
Johne's PCR*	>20g faeces	Wed	Up to 7 days	42.50	JOHNES_PCR
	Pool Faeces (up to 5 samples)			52.00	JOH_PCR_PF
ORF virus PCR	Scab	As requested	Up to 10 days	38.00	ORF_PCR

Routine biochemistry	Turnaround	Price (£)
Serum sample required Albumin, AST, BHB, bilirubin, CK, creatinine, GGT, GLDH, globulin, glucose, magnesium, NEFA, phosphate, protein, total calcium, urea		
1-4 tests	1-2 days	10.35
5-9 tests	1-2 days	7.00
10 or more tests (or in addition to any profile)	1-2 days	6.00

Special biochemistry	Sample Requirements	Turnaround	Price (£)	Code
Chloride	Serum	Up to 2 days	16.60	CHLORIDE
Copper	Serum or heparin	Up to 2 days	11.00 8.80 (5+)	COPPER COPPER_4
Copper liver	5g fresh tissue	Up to 7 days	48.40	COPPER_LVR
Copper kidney	5g fresh tissue	Up to 7 days	48.40	COPPER_KDY
Fibrinogen	Citrate blood	Up to 2 days	37.50	FIBRINOGEN
Haptoglobin	Serum	Up to 5 days	25.10	HAPTOGLOBIN
Iodine - pooled up to 6 samples	Serum, heparin	Up to 1 month	30.25	PII
Iron	Serum	Up to 5 days	32.00	IRON
Iron (total iron binding capacity, % saturation)	Serum	Up to 5 days	38.00	IRON_BIND
Lead Bovine & Ovine only	Heparin	Up to 5 days	30.00	LEAD
Lead	5g fresh tissue	Up to 7 days	48.40	LEAD_LVR
Manganese	Heparin	Up to 4 days	26.40	MN
Pepsinogen	Serum	Up to 7 days	24.50	PEPSINOGEN
Potassium	Serum	Up to 2 days	16.60	POTASSIUM
Selenium (GSH-Px)	Heparin	Up to 5 days	12.00 8.50 (5+)	GSH_PX GSH_PX_4
Selenium	5g fresh tissue	Up to 7 days	48.40	SELEN_LVR
Selenium	Serum or heparin	Up to 7 days	25.50	SELEN_SER
Sodium	Serum	Up to 2 days	16.60	SODIUM
Vitamin A	Serum	Up to 7 days	32.50	VIT_A
Vitamin B12	Serum	Up to 4 days	14.70 13.50 (5+)	VIT_B12 VIT_B12_4
Vitamin B12	5g fresh tissue	Up to 7 days	48.40	COBALT_LVR
Vitamin E	Serum	Up to 7 days	32.50	VIT_E
Vitamin A & E	5g fresh tissue	Up to 7 days	66.30	VIT_E_LVR
Zinc	Serum (no metal, rubber stopper or gel tubes)	Up to 3 days	18.50 12.00 (5+)	ZINC ZINC_5
Zinc Sulphate turbidity test	Serum	Up to 7 days	12.10 7.10 (5+)	ZST ZST_4

Histopathology & cytology	Sample Requirements	Turnaround	Price (£)	Code
Histopathology	Up to 3 tissues in 10% buffered formalin	Up to 7 days	102.10	HE_LA
Histopathology additional tissue	Tissue in 10% buffered formalin	Up to 7 days	20.00	HE_LA_ADD
Histopathology on post-mortem tissue	Up to 3 tissues in 10% buffered formalin	Up to 7 days	118.50	HE_PM
Histopathology on post-mortem tissue additional sample	Tissue in 10% buffered formalin	Up to 7 days	23.20	HE_PM_ADD
Cytology single site	Up to 4 smears	1-2 days	65.00	CYT_SMEAR
Cytology additional site	Smear	1-2 days	39.00	CYT_ADD
Large animal vasectomy check	Tissue in 10% buffered formalin	Up to 7 days	78.00	VASECTOMY



Ruminant

Biochemistry profiles & haematology	Sample Requirements	Turnaround	Price (£)	Code
Large animal full profile Routine haematology, albumin, AST, bilirubin, calcium, CK, creatinine, GGT, GLDH, globulin, glucose, magnesium, phosphate, total protein, urea	Serum, fluoride, EDTA and freshly made blood smears	Up to 2 days	105.00	PROF 012
Large animal full profile, biochemistry only	Serum and fluoride	Up to 2 days	45.70	PROF 036
Large animal liver profile Albumin, AST, bilirubin, GGT, GLDH, globulin, total protein	Serum	Up to 2 days	34.50	PROF 025
Ruminant metabolic profile Albumin, BHB, calcium, globulin, glucose, magnesium, NEFA, phosphate, total protein, urea	Serum and fluoride	Up to 2 days	35.70 32.00 (5+)	PROF 009 PROF 037
Tissue analysis Copper, cobalt and selenium	5g fresh tissue	Up to 7 days	71.00	PROF 059
Downer cow profile AST, calcium, CK, magnesium, phosphate, urea	Serum	Up to 2 days	31.00	PROF 054
Bovine trace element profile Copper, selenium (GSH-Px)	Serum and heparin	Up to 5 days	21.00 15.00 (5+)	PROF 008 PROF 039
Ovine trace element profile Copper, selenium (GSH-Px), Vitamin B12	Serum and heparin	Up to 5 days	30.00 25.50 (5+)	PROF 049 PROF 050
Periparturient recumbent ewe profile BHB, calcium, magnesium	Serum	Up to 2 days	17.50	PROF 047
Pre lambing profile Albumin, BHB, urea	Serum	Up to 2 days	17.50 9.50 (5+)	PROF 046 PROF 052
Camelid profile Large animal full profile plus smear exam for parasites	Serum, fluoride, EDTA and freshly made blood smears	Up to 3 days	105.00	PROF 057
Routine haematology plus smear examination	EDTA and freshly made blood smears	1-2 days	68.00	PROF 002
Haemoglobin or PCV	EDTA	1-2 days	16.50	HB/HCT
Smear examination for haematological parasites	EDTA and freshly made blood smears	1-2 days	31.00	SMEAR_HAEM
Smear examination (blood only)	Freshly made blood smears	1-2 days	31.00	SMEAR_RPT

Ruminant

Faecal	Sample Requirements	Turnaround	Price (£)	Code
Worm egg count & Coccidia Bovine, Ovine, Caprine	5g faeces	1 to 2 days	18.40 16.00 (5+)	WORM_EGG WORM_4PLUS
Worm egg count & Coccidia Camelid	5g faeces	Up to 5 days	36.50	WORM_CAM
Fluke Egg detection	12g faeces	1 to 2 days	23.20	FLUKE_EGG
Coccidia count	5g faeces	1 to 2 days	14.80	WORM_COCCI
Worm egg count, no Coccidia	5g faeces	1 to 2 days	14.80	WORM_ONLY
Pooling charge for up to 10 samples	3g faeces per sample	n/a	18.50	CHRG_WORM
Worm egg count & Coccidia (add on to young ruminant profile)	5g faeces	1 to 2 days	15.10	WORM_ADD
Coccidial speciation - ovine	5g faeces	Up to 7 days	58.00	COCCI_SPEC
Haemonchus stain	5g faeces	Up to 7 days	85.10	HCHUS_DIFF
Lungworm larvae	12g faeces	Up to 3 days	24.00	LUNG_LARV
Faecal Giardia (immunological)	1g faeces	Up to 2 days	26.60	GIARDIA
Cryptosporidium	1g faeces	1 to 2 days	27.00	CRYPTO
Salmonella	1g faeces	Up to 5 days	32.00	SALMONELLA
Rotavirus PAGE	1g faeces	Up to 6 days	39.70	ROTA_PG
Coronavirus	1g faeces	Up to 6 days	19.70	B_CVV
Rotavirus ELISA	1g faeces	Up to 7 days	19.70	RVV
Pre-treatment composite faecal egg count as part of the Pathway testing in sheep	15x3g faeces	1 to 2 days	40.50	PATH_PRE
Post-treatment composite faecal egg count as part of the Pathway testing in sheep	15x3g faeces	1 to 2 days	40.50	PATH_POST
Kit supply and postage per sampling as part of the Pathway testing in sheep			11.60	PATH_SPKIT
Neonatal cattle enteritis profile (<5 days old) Bacteriology including Salmonella, Rotavirus, Coronavirus, Cryptosporidium, E.coli K99	5g faeces	Up to 7 days	69.50	PROF 030
Neonatal small ruminant enteritis profile (<5 days old) Bacteriology including Salmonella, Rotavirus, Cryptosporidium	5g faeces	Up to 7 days	69.50	PROF 060
Young cattle enteritis profile (6-21 days old) Salmonella, Rotavirus, Coronavirus, Cryptosporidium	5g faeces	Up to 7 days	62.70	PROF 029
Young small ruminant enteritis profile (6-21 days old) Salmonella, Rotavirus, Cryptosporidium	5g faeces	Up to 7 days	62.70	PROF 061
Growing cattle enteritis profile (>22 days old) Salmonella, worm egg count, coccidia count	5g faeces	Up to 7 days	48.00	PROF 053
Adult ruminant scour profile Johne's PCR, Fluke coproantigen ELISA, Salmonella	30g faeces	Up to 7 days	92.00	PROF 056

Endocrine	Sample Requirements	Turnaround	Price (£)	Code
T4 Bovine	Serum or heparin	Up to 4 days	15.30 14.20 (5+)	T4_TOTAL_LA T4_BOV_5
Progesterone	Serum	Up to 3 days	44.00	PROGESTER

Ruminant

Microbiology	Sample Requirements	Turnaround	Price (£)	Code
Routine bacteriology (including culture & sensitivity)	Swab, tissue	Up to 6 days	45.65	BACTERIAL
	Milk		30.00 (5+)	BACT_4
Milk bacterial culture only	Milk (in sterile container)	Up to 7 days	41.90	BACT_MILK
Routine anaerobic culture	Milk (in sterile container)	Up to 7 days	23.60	BACT_CULT
			19.00(4+)	B_CULT_4
Routine anaerobic culture	Swabs or tissue	Up to 6 days	75.50	BACT_ANAER
<i>E. coli</i> K99	1g faeces	Up to 2 days	30.00	K99
Yersinia culture	1g faeces	Up to 7 days (28 days for negative)	32.00	YERSINIA
Clostridial toxins	5ml small intestinal contents in sterile universal	Up to 8 days	50.00	CLOSTRID

Urinalysis and Dermatology	Sample Requirements	Turnaround	Price (£)	Code
Urinalysis (USG, dipstick, microscopic deposit exam)	10ml urine	Up to 7 days	38.50	PROF 020
Full urinalysis (USG, dipstick, microscopic deposit exam, C&S)	10ml urine	Up to 7 days	82.00	PROF 055
Urine cytology by pathologist	6ml urine	Up to 7 days	58.50	UR_CYT
Skin scraping for ectoparasites	Skin scraping	Up to 7 days	26.50	SKIN_SCRAP
Direct microscopic exam for bacteria and fungi	Skin/hair plucks (inc. roots and scabs)	Up to 2 days	26.50	MICRO_EXAM
Skin analysis panel Microscopic exam and dermatophyte culture	Skin/hair plucks (inc. roots and scabs) and skin scraping	Up to 7 days	56.00	PROF 045

Porcine

We offer a range of porcine clinical pathology tests as well as porcine serology tests for contract customers including PRRS serology and PCR, and serology for *M. hyopneumonia* and Swine Influenza. Please contact us for enquiries.

Extras	Price (£)
Fee for posted copies of report	3.00
Incorrectly/dangerously packaged samples	25.00

Laboratory Supplies and Extras

We offer a range of consumables which can be ordered through the forms found on our website:

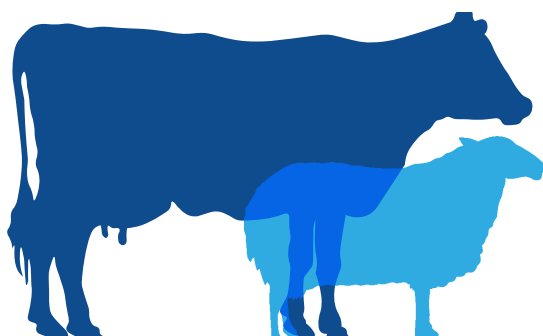
www.biobest.co.uk/biobest-submission-forms

This includes naso-pharyngeal swabs for respiratory PCR and ear tags for BVD antigen testing.

HiHealth Herdcare membership options	Price (£)
CHeCS herd health programmes for BVD, Leptospirosis, IBR, Johne's, Neospora and bTB	
Full Membership Testing and accreditation for up to 5 diseases: BVD, IBR, Johne's disease, Leptospirosis, Neospora	100.00†
BVD accreditation only BVD testing and control	42.00†
bTB accreditation (includes Entry Level) only	49.00
bTB accreditation (includes Entry Level) add on to BVD or full membership	33.00
bTB Entry Level only	32.00
bTB Entry Level add on to BVD only or full membership	19.00
HiHealth Flockcare add on to any HiHealth Herdcare membership	27.00
Bulk milk monitoring programme (3 bulk milk samples per annum including testing, milk pots and veterinary reporting) BVD, IBR & Leptospirosis CHeCS programme & Johne's, Neospora, Liver fluke and Ostertagia	162.00†
Use of results from an external lab towards herd status BVD	32.00
Use of results from an external lab towards herd status Johne's disease, IBR, Leptospirosis, Neospora	55.00
†A £10 surcharge will be applied to all members who wish to receive results and invoices by mail instead of email.	

Disease Testing	Turnaround	Price (£)	Code
CHeCS Testing			
Antibody assays (serum or individual milk[§])			
BVD ELISA	Up to 3 days	4.50	AG-BVDS
Johne's ELISA	Up to 3 days	5.35	AG-JOH-IX
Leptospira hardjo ELISA	Up to 4 days	6.50	AG-LEP-LN
IBR ELISA	Up to 3 days	5.00	AG-IBRS
IBR gE marker ELISA	Up to 7 days	9.50	IBR_GE_SRM
Neospora caninum ELISA	Up to 7 days	8.00	NEO_ELISA
Virus detection			
BVD antigen ELISA (serum)	Up to 4 days	7.50	BVDV
PCR			
Johne's (individual faecal sample)*	Up to 7 days	38.50	JOHNES_PCR
Johne's (pooled faecal up to 5 samples)*	Up to 7 days	50.00	JOH_PCR_PF
BVD (pooled serum up to 10 samples)*	Up to 5 days	42.50	BVD_PCR003
BVD (ear tissue tag and test)*	Up to 5 days	9.00	BVD_PCR004
BVD (ear tissue test only)*	Up to 5 days	5.60	BVD_PCR004
Pliers for BVD Ear tissue testing	n/a	25.00	
Individual animal sales certificate (Declaration required please contact office)	n/a		
Members		11.00	
Non members		6.50 (7+) 22.00	

§ Turnaround times for milk samples may vary. Please refer to page 8 for individual testing schedules.



Sheep Health Scheme

HiHealth Flockcare membership options	Price (£)
Annual membership	42.00†
HiHealth Flockcare & Herdcare full membership	127.00†

†A £10 surcharge will be applied to all members who wish to receive results and invoices by mail instead of email.

HHF Profiles and Disease Testing	Turnaround	Price (£)	Code
Pre-lambing nutritional profile (BHB, urea, albumin)	Same to next day	16.50 8.50 (5+)	PROF 046 PROF 052
Periparturient recumbent ewe profile (serum) BHB, Ca, Mg	Same to next day	16.50	PROF 047
Trace element profile (samples from 6 animals - copper, cobalt, selenium)	Up to 5 days	140.00	PROF 062
MV/CAE	Up to 7 days	10.50 8.00 (50+)	MV_CAE MV_CAE_50
CLA	Up to 15 days	11.25 9.50 (50+)	CLA CLA_50
EAE (<i>C. abortus</i>)	Up to 7 days	12.50	EAE
Toxo	Up to 7 days	12.50	OV_TOXO
Johne's disease Ab ELISA	Up to 3 days	5.35	AG-JOH-IX
Johne's disease PCR (faeces)* Pool of up to 5 samples	Up to 7 days	38.50 50.00	JOHNES_PCR JOH_PCR_PF
Border disease virus Ab ELISA	Up to 7 days	12.00 11.00 (10+)	BDV BDV_10
Border disease virus PCR* Pool of up to 10 samples Individual as follow up for a positive pool	Up to 5 days	30.00 42.50 25.00	BDV_PCR BDV_POOL BDV_FLW

Metabolic profile and trace element testing is also available. Please contact the cattle health team for further advice or information packs.

*Please note these samples need to be prepared for testing in advance and as such must arrive at Biobest at least 1 day prior to the official test day.

Disease	Testing requirement	Time interval between tests
BVD	<p>Antibody check test on 5 animals from each management group of animals 9–18 months for antibody. Consult CHeCS rules for definition of separate groups.</p> <p>Or</p> <p>Test all calves born over a 12-month period for virus.</p> <p>In addition bulk milk antibody testing in dairy herds not vaccinating against BVD.</p>	<p>12-month interval between antibody check tests.</p> <p>Calf virus testing ongoing throughout year.</p> <p>Quarterly bulk milk tests. If main bulk tank antibody positive test sample from 1st lactation heifers only – see CHeCS rules.</p>
IBR	Antibody test all animals 12 months and over plus all younger non-homebred animals.	1-12 months
Leptospirosis	Antibody test all animals in the herd 2 years and over plus animals between 1 and 2 years old that are to be kept for breeding.	6-12 months
Johne's disease	Antibody test all animals in the herd 2 years and over.	12 months
Neospora	Antibody test all females in the herd 2 years and over plus females between 1 and 2 years old that are to be kept for breeding and any purchased females.	12 months



Bovine TB CHeCS herd accreditation is also available a TB score based on the last 10 years of TB test Tuberculosis (bTB) Herd Accreditation Programme incorporating rules for cattle health schemes, are available [downloads/](#)

An entry level CHeCS TB programme is also now

Accreditation requirement	Maintaining accreditation
<p>2 clear tests, 1 on each of 2 subsequent calf crops.</p> <p>Or</p> <p>2 clear calf crops. Every calf born must be tested.</p> <p>Negative herd or 1st lactation bulk tests.</p>	<p>Annual young stock check test</p> <p>Or</p> <p>Continuing negative virus screens of every calf born.</p> <p>In addition bulk milk testing can be used to monitor dairy herds (not compulsory).</p>
<p>2 clear tests</p>	<p>Antibody testing on a statistical sample of animals 12 months and older – see CHeCS rules for further details.</p> <p>Breeding bulls, and for IBR all non-homebred and marker vaccinated animals must additionally be tested. In dairy herds milking animals are not included in the sample but are monitored through quarterly bulk milk tests.</p>
<p>2 clear tests</p>	
<p>A herd is assigned a Risk Level according to the percentage of reactors identified - see CHeCS rules for further details. 3 clear annual tests allow Risk Level 1 status. Biennial testing for herds that have been Risk Level 1 for over 2 years may be possible.</p>	
<p>A herd is assigned a Risk Level according to the percentage of reactors identified - see CHeCS rules for further details. 3 clear annual tests allow Risk Level 1 status.</p>	



...e through HiHealth Herdcare. A herd is given data supplied by APHA. The CHeCS Bovine details, and the CHeCS Technical Document available at <http://www.checs.co.uk/about-us/>

...v available

Companion Animal Tests



Feline

Feline Diagnostics	Sample Requirements	Testing Days	Turnaround	Price (£)	Code
Rabies					
Rabies serology for UK vets* (see p25)	Minimum 2ml blood, 1ml serum	Mon, Wed, Fri	Up to 10 working days	88.00	RABIES
Rabies serology* (overseas and non-account customers) Includes admin fee	Minimum 2ml blood, 1ml serum	Mon, Wed, Fri	Up to 10 working days	95.00	RABIES
Rabies express* (requires 24h advance notice)	Minimum 2ml blood, 1ml serum	Mon, Tues, Wed, Fri	Up to 3 working days	715.00	RABEX
* Includes certificate and titre in IU/ml					
Rabies Certificates					
Authenticated copy			2-3 days	31.00	
Replacement certificate			4-5 days	40.00	
Electronic certificate			2-3 days	40.00	
Serology					
Feline coronavirus IFA	Serum	Mon, Wed, Fri	1-2 days	38.50	FCOS
Feline immunodeficiency virus IFA	Serum	Mon, Wed, Fri	1-2 days	50.00	FIVS
Toxoplasma gondii IgG and IgM IFA	Serum	Weekdays	Up to 2 days	48.00	F_TOXO_GM
Neospora IFA	Serum	Tues, Thurs	Up to 4 days	48.00	F_NEOS
Panleukopaenia virus IFA/HAI	Serum	Mon	Up to 7 days	47.50	FPS
Calicivirus VNT	Serum	Mon	Up to 7 days	75.00	FCAV
Herpesvirus VNT	Serum	Mon	Up to 7 days	75.00	FHVS
Feline TB interferon gamma test (see p25)	3ml heparinised blood	Thurs	Call for advice	300.00	FTBIG



Feline

Feline Diagnostics	Sample Requirements	Testing Days	Turnaround	Price (£)	Code
Pathogen Detection					
FelV antigen	Air-dried smear or EDTA blood	Tues	Up to 7 days	45.00	FELV
Respiratory virus isolation FHV/Calicivirus	Swab in transport medium	Mon	Up to 10 days	35.00	F_VIRUS_IS
Pox virus isolation	Swab in transport medium or from scab	Thurs	Up to 10 days	35.00	F_POX_VI
Triple respiratory profile - respiratory VI + FHV & Chlamydia PCR	2 swabs in transport medium	As per individual tests	Up to 10 days	80.00	F_RESP
Chlamydia PCR	Ocular or nasal swab	As requested	Up to 7 days	55.00	PCRFC
Herpesvirus PCR	Ocular or nasal swab	As requested	Up to 7 days	55.00	PCRFH
Chlamydia & Herpesvirus PCR	Ocular or nasal swab	As requested	Up to 7 days	70.00	PCR_FH_FC
Panleukopenia PCR	Faeces or tissue	As requested	Up to 7 days	60.50	FPV_PCR

Dogs	Sample Requirements	Testing Days	Turnaround	Price (£)	Code
Rabies					
Rabies serology for UK vets* (see p25)	Minimum 2ml blood, 1ml serum	Mon, Wed, Fri	Up to 10 working days	88.00	RABIES
Rabies serology* (overseas and non-account customers) Includes admin fee	Minimum 2ml blood, 1ml serum	Mon, Wed, Fri	Up to 10 working days	95.00	RABIES
Rabies express* (requires 24h advance notice)	Minimum 2ml blood, 1ml serum	Mon, Tues, Wed, Fri	Up to 3 working days	715.00	RABEX
* Includes certificate and titre in IU/ml					
Rabies Certificates					
Authenticated copy			2-3 days	31.00	
Replacement certificate			4-5 days	40.00	
Electronic certificate			2-3 days	40.00	
Serology					
Pre-booster immunity check Titres to Distemper Virus, Adenovirus and Parvovirus	Serum or blood	As per individual tests	Up to 7 days	75.00	DAPS
Canine TB interferon gamma test (see p25)	3ml heparinised blood	Thurs	<i>Call for advice</i>	300.00	FTBIG
Distemper virus VNT	Serum	Thurs	Up to 7 days	30.00	CDS
Adenovirus VNT	Serum	Thurs	Up to 7 days	30.00	CAS
Parvovirus IFA/HAI	Serum	Mon	Up to 7 days	30.00	CPS
Toxoplasma gondii IgG & IgM IFA	Serum	Weekdays	Up to 2 days	48.00	C_TOXO_GM
Neospora caninum IFA	Serum	Tues, Thurs	Up to 4 days	48.00	CNEOS
Parainfluenza VNT	Serum	Thurs	Up to 10 days	125.00	CPIF
Herpesvirus VNT	Serum	Thurs	Up to 7 days	125.00	CHVS
Leptospirosis IFA (detects antibodies to all pathogenic serovars but not vaccination)	Serum	Tues	Up to 7 days	84.00	CLEPTO
CPSE - prostate hyperplasia (detects canine prostate specific arginine esterase)	Serum	Tues	Up to 7 days	100.00	CPSE
Pathogen Detection					
Virus Isolation (adenovirus/ herpesvirus/ parainfluenza)	Swab in transport medium	Thurs	Up to 14 days	35.00	C_VIRUS_IS
Leptospirosis PCR*	Tissue, EDTA blood or urine	Tues	Up to 7 days	88.00	CLEPTO_PCR
Parvovirus PCR	Faeces or tissue	As requested	Up to 7 days	60.50	CPV_PCR
Distemper PCR*	CSF, EDTA blood, swab (not gel), tissue or urine	Fri	Up to 7 days	88.00	CDPCR





Avian

Birds	Sample Requirements	Testing Days	Turnaround	Price (£)	Code
Avian chlamydia PCR*	Faeces, cloacal swab or tissue	Tues, Thurs	Up to 4 days	45.00	PCRAC
Psittacine beak and feather disease PCR*	Feather, heparinised blood, tissue	Tues, Thurs	Up to 4 days	45.00	PCRPFBD
Polyomavirus PCR*	Feather, heparinised blood, faeces, cloacal swab or tissue	Tues, Thurs	Up to 4 days	45.00	PCRAP
Avian sexing PCR	Egg membranes, mouth swabs, feather, heparinised blood, tissue	Mon, Wed	Up to 4 days	45.00	PCRAS

Equine

Horses	Sample Requirements	Testing Days	Turnaround	Price (£)	Code
Equine viral arteritis titration	Serum	Mon, Fri	Up to 5 days	60.00	EVA_TITR
Equine infectious anaemia serology (Coggins test)	Serum	Mon, Tues, Wed, Thurs	Up to 3 days	60.00	EIA
Combined viral arteritis & infectious anaemia serology test	Serum	As per individual tests	Up to 5 days	100.00	EQU_2TEST
Rotavirus diagnostics (please phone for advice)		As requested	On demand	POA	

Lyme Disease

Ticks	Sample Requirements	Testing Days	Turnaround	Price (£)	Code
Lyme disease PCR*	Single tick	Thurs	Up to 7 days	62.00	LYME_PCR

*Please note these samples need to be prepared for testing in advance and as such must arrive at Biobest at least 1 day prior to the official test day.

Special Biochemistry	Sample Requirements	Turnaround	Price (£)	Code
AGP	Serum	1-2 days	35.00	AGP
Short FIP profile: FCoV serology, AGP and albumin/globulin	Serum	1-2 days	70.00	FIP_PACK
Full FIP profile (wet): FCoV serology, AGP, albumin/globulin and cytology	Serum and air-dried smear or EDTA blood	1-2 days	130.00	PROF 043
Full FIP profile (dry): FCoV serology, AGP, albumin/globulin and haematology	Serum and air-dried smear or EDTA blood	1-2 days	130.00	PROF 044
Small animal full profile Routine haematology, albumin, ALT, AP, bilirubin, calcium, chloride, cholesterol, creatinine, globulin, glucose, phosphate, potassium, sodium, total protein, urea	Serum, fluoride, EDTA and freshly made blood smears	1-2 days	142.00	PROF 006
Small animal full profile, biochemistry only	Serum and fluoride	1-2 days	72.50	PROF 035

Haematology	Sample Requirements	Turnaround	Price (£)	Code
Routine haematology including smear exam by a pathologist	EDTA and freshly made blood smears	1-2 days	68.00	PROF 002
Blood smear report	EDTA and freshly made blood smears	1-2 days	31.00	SMEAR_RPT
Smear examination for haematological parasites	EDTA and freshly made blood smears	1-2 days	31.00	SMEAR_HAEM
Fibrinogen	Citrate	Up to 2 days	21.00	FIBRINOGEN



Stem Cell Therapy

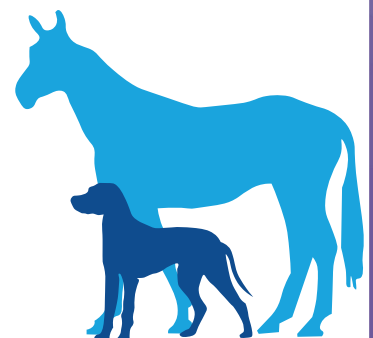
Stem cell	Price (£)
Equine bone marrow aspiration kit (including transport box)	165.00
Canine adipose tissue kit (including transport box)	80.00
Transport box only	33.00
Equine stem cell culture (up to 40 million cells from bone marrow aspirate)	1320.00
Canine/Feline stem cell culture (≤40 million cells from adipose tissue, includes cryopreservation)	755.00
Canine/Feline stem cell culture (≤80 million cells from adipose tissue, includes cryopreservation)	925.00
Canine/Feline stem cell culture (≤120 million cells from adipose tissue, includes cryopreservation)	1100.00
Cryopreservation of equine stem cells (up to 5 yrs)	250.00
Resuscitation of cryopreserved cells (10 million)	260.00
Turnaround times will vary based on your requirements, please call to discuss	

Biobest is the original and most experienced provider of autologous stem cells in the UK. Our pioneering work started nearly 20 years ago in collaboration with the RVC and our cells have a proven track record in equine and canine regenerative therapies. There is a large and growing publication base demonstrating the efficacy of autologous stem cells in a range of common clinical problems. The advantages of the system we use include:

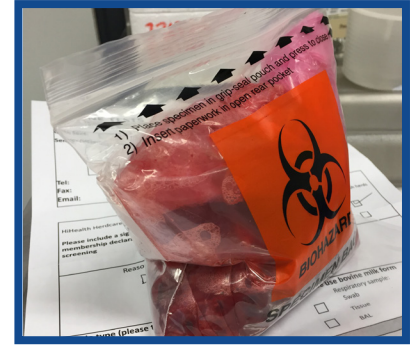
- Pure autologous cells resuspended in the patient's own plasma; no reported adverse reactions to cell implantation
- Fresh cells with proven viability for 48 hours from preparation
- Large numbers of cells which is associated with better and longer lasting clinical effects (5x the cells typically dispatched by other providers and off the shelf products)
- No toxic excipients that reduce cell viability

In dogs we typically find that a substantial clinical improvement is seen for at least 12 months following implantation. We store cells so that repeat treatments can be requested for 5 years from the date of first harvest. In horses we have seen return to successful competition following serious tendon injuries where our autologous stem cells were used in a controlled rehabilitation programme.

Our team of vets and cell scientists is available to discuss cases and possible applications. Please contact us if you would like to learn more or have a case in which you would like to try autologous stem cell therapy.



Sending Samples



What to Avoid when Sending Samples

Sending haemolysed blood

Pre-pooling samples; samples should be sent individually for pooling to be done at Biobest

Sending potentially hazardous samples without contacting Biobest first

Using a container if sample content has seeped onto its exterior

Using gloves or any other non-leak proof container

Using sellotape on sample tubes

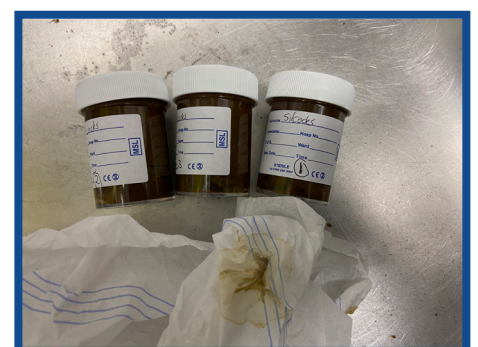
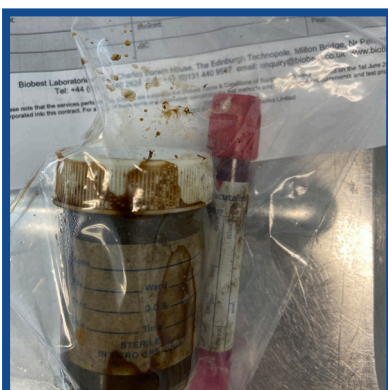
Packaging 2 samples in the same bag or container

Labelling only the outer packaging and not the sample itself

Writing multiple sample numbers on a single sample container

Placing samples in non-sequential order in boxes

Using excessive sellotape on outer packaging



Test Specific Sample Guidelines

Rabies testing

Sample types:

- Whole blood
 - Serum
- Please send minimum 2ml blood or 1ml serum
 - Clearly label the sample with the animal's name AND microchip number
 - Ensure the sample is sealed securely and wrapped in cotton or paper towel
 - Enclose the sample in a small rigid container i.e. small clean Tupperware
 - Ensure the enclosed submission form has been signed by your vet and the details match those on the sample exactly
 - Check www.biobest.co.uk/rabies-testing for mailing details



Respiratory PCR testing

*Includes BoHV-1 (causative agent of IBR), PI3, RSV, Bovine coronavirus, *Mycoplasma bovis*, *Histophilus somni*, *Pasteurella multocida*, *Mannheimia haemolytica*

Sample types:

- Plain dry nasopharyngeal swabs (gel/agar swabs **cannot** be tested)
 - Tissue (not fixed)
 - BAL fluid (>5ml)
- Up to 5 samples of the same type can be pooled
 - Samples should be received at the lab within 24 hours of collection; chilled transport preferred
 - If samples are collected on a Friday they should be frozen at the practice over the weekend and sent to us on Monday with freezer packs to ensure they remain frozen. Do not send samples over the weekend as they will not be able to be stored correctly once they arrive
 - Due to the multiple PCRs required, there is a test limit of a maximum 10 samples at a time. At busy times we will schedule extra tests to meet demand and reduce turnaround time.

Feline TB interferon gamma testing

Samples type:

- Whole blood
- Blood must be Heparinised (minimum 3ml)
 - Samples must not have been chilled at any point
 - Samples must have been taken from the animal <48 hours before test is scheduled

Please ensure all samples arrive the day before the test is scheduled to be set up to allow booking in and processing of samples prior to testing.

1. Routine Diagnostic Testing Services

We shall conduct diagnostic testing services ("Routine Diagnostic Testing Services") as follows:

- a. We will test a sample following its receipt as per any report or specification provided by us and in accordance with the test schedule and turnaround times publicised in our current marketing materials or on our website (www.biobest.co.uk). The testing schedule is subject to change by us without prior notification. We will use reasonable endeavours to ensure that tests are completed as per this schedule; however we make no guarantees of test times, unless specifically agreed to by us in writing. In this respect time shall not be of the essence. Upon request urgent tests may at our discretion be conducted outside the normal test schedule. In such circumstances additional charges may be applicable, and these shall be notified to you in advance of setting up the test.
- b. If a sample is received in a condition such that it is considered to be broken or otherwise unsuitable for testing, we will inform you immediately and request submission of a repeat sample. There will be no additional charge in such circumstances. However, we reserve the right to charge for the original and re-test where the unsuitable condition of the sample does not become apparent until during or after test completion.
- c. If we receive a request for test cancellation before we have set up the test, we will provide a full refund. If we receive a request for test cancellation after we have set up the test, we reserve the right to charge an amount to reflect our costs incurred up to the standard test price.
- d. If we receive a request from you to add a test to a sample already received, we will conduct this additional test providing there is sufficient material. The additional charge will be as per the standard test price.
- e. The diagnostic test service includes as standard faxed, e-mailed or posted reports, and where specifically requested telephoned results; interpretation of results by a veterinary surgeon; advice on sampling and submission; and supply of sampling kits where appropriate. We retain ownership of and retain all copyright and other intellectual property rights in all reports, written advice and other materials prepared by us.

2. Contract Research, Project Studies, Supply of Goods

We shall conduct contract research, project studies, supply of Goods and any other service or product that we supply which is not classified as a Routine Diagnostic Testing Service (together, "the Services"), as per the scope of work and terms and conditions specified and previously agreed to by us in writing in any tender request, proposal documentation and agreed contract. In the absence of any such agreed contract, these Conditions will apply. Unless otherwise agreed in writing payment terms for such research or study work will be 40% of contract value on signature of the contract by us, 30% on completion of testing and 30% on delivery of final report.

3. Samples and Results

- a. Unless otherwise agreed with us in writing, all samples received by us for Routine Diagnostic Testing Services shall become our property upon delivery of the sample to us or collection of the sample by us and, on the completion of Routine Diagnostic Testing Services, may be retained and used for research and development and other purposes. Any data or other results (and all intellectual property and other rights in them) arising from such use shall belong to us and you shall not have any rights in any of them.
- b. Unless otherwise agreed with us in writing, all data, results, reports and advice produced by us as a result of our carrying out the Routine Diagnostic Testing Services shall be our property and may be used for such purpose(s) as we decide from time to time.
- c. If you provide any data or information with, or relating to, the samples, we may use such data and information for our own purposes and may provide it to third parties in an anonymised manner. All personal data is held in full compliance with the General Data Protection Regulations (GDPR) and will only be passed to third parties where it is a legal requirement for us to do so or where we have your informed consent.

4. Prices and Payment

- a. Prices are publicised on our website and in our current marketing materials. We reserve the right to change prices.
- b. All prices for eligible transactions are subject to VAT at the current rate.
- c. For non-account holders and new customers we require payment upon submission of the sample before an order will be accepted. We accept payment in pounds Sterling in the form of a cheque, bankers draft, by an electronic transfer of funds to a bank account of our choosing (with you being responsible for any costs associated with such transfer) or by debit or credit card.
- d. For repeat customers and account holders we will invoice on a monthly basis. You shall pay the full amount of any invoice within 30 days from date of invoice. We will exercise our statutory right to charge interest and compensation for debt recovery costs under late payment legislation if we are not paid according to agreed credit terms.
- e. We will request two trade and one banker's reference in order to set up a new account.

5. Delivery

- a. If any Goods are to be delivered by us as part of this Contract then such Goods shall be delivered to a delivery address agreed to by the parties during our normal business hours. If any Goods are to be delivered outside the United Kingdom, such delivery shall be Exworks Incoterms 2000.
- b. We shall make reasonable endeavours to deliver any Goods within timescales notified to you. If no dates are specified, delivery shall be within a reasonable time, however time shall not be of the essence.
- c. The Goods shall remain our property and title in the Goods shall not pass to you until all sums due by you to us have been paid.
- d. Until the transfer of title in terms of Condition 5c above:-
 - (i) you shall store the Goods in a manner which distinguishes them from any other goods and which indicates that the Goods are owned by us;
 - (ii) the Goods shall be kept at your premises and you shall take good care of the Goods and use and maintain them in accordance with good industry practice;
 - (iii) you shall be responsible for loss of, or damage to the Goods; and
 - (iv) you shall not permit any form of security or charge to be created over the Goods.
- e. Until the property in the Goods passes to you in accordance with the provisions of Condition 5c above, you shall keep the Goods insured to their full replacement value with full comprehensive insurance to be approved by us and with our interest noted on the policy. Evidence of such insurance shall be made available to us at any time on request.

6. Warranty of Performance

- a. We shall exercise all reasonable skill, care and professional due diligence in the performance of the Services, however we do not guarantee or warrant that any particular result is correct or otherwise.
- b. All conditions, representations and warranties relating to the Goods and/or the Services and their use and receipt and all remedies otherwise available to you are excluded to the fullest extent permitted by law

7. Limitation of Liability

- a. Under no circumstances shall our liability for any loss or damage suffered by you or any other person as a result of our performance or non-performance of our obligations under this Contract be greater than £10,000 or the total sums received by us under the provisions of the Contract, whichever is the greater. You shall indemnify us in respect of any loss sustained and any expenses incurred by us arising directly out of or in connection with your breach of this Contract.
- b. We shall not be liable in any circumstances for any indirect or consequential loss or loss of anticipated profits, loss of anticipated savings or any other economic loss of yours.
- c. Notwithstanding the provisions of Condition 7a and 7b above, neither party excludes or limits liability to the other party for death or personal injury arising from the breach of duty of such party.
- d. Our liability to you under this Contract is excluded to the fullest extent permitted by law.
- e. Should any limitation or provision contained in this Condition be held to be invalid under any applicable statute or rule of law it shall to that extent be deemed omitted but if either party thereby becomes liable for loss or damage which would otherwise have been excluded such liability shall be subject to the other limitations and provisions set out herein.

8. Force Majeure

- a. Any delay or failure by either party in performance hereunder, other than your obligation to pay us any monies due to us, shall be excused if and to the extent that such delay or failure is caused by occurrences beyond such party's reasonable control including but not limited to, acts of God, decrees or restraints of government, strikes, war, fire, riot, sabotage, terrorism and any other cause or causes whether similar or dissimilar to those already specified which cannot reasonably be controlled by either party. Such performance shall be so excused for the period during which such inability of the party to perform is so caused but for no longer period and shall be remedied as far as possible with all reasonable despatch. Any time period for performance shall be extended by a period equal in duration to any period during which such performance is excused by this Condition.
- b. If any of the events detailed in Condition 8a above prevents either party from performing all of its obligations under the Contract for a period in excess of one month, the party affected by such non-performance may terminate the Contract.

9. Termination

- a. We may terminate this Contract by providing written notice to that effect to you.
- b. In addition to, but without prejudice to our other rights and remedies under and in terms of this Contract, we may terminate this Contract forthwith if:-
 - (i) you fail to pay any part of the price payable to us by the date specified in Condition 4 above;
 - (ii) you become insolvent or enter into any arrangement with your creditors;
 - (iii) a petition is presented, or a resolution proposed, for the winding-up of your business;
 - (iv) any procedure is commenced with a view to the appointment of an administrator, receiver or administrative receiver in relation to you or any other party gives notice of its intention to appoint an administrator to you;
 - (v) you are unable to pay your debts as they fall due;
 - (vi) you cease trading or threaten to cease trading; or
 - (vii) any equivalent event as outlined in Conditions 9b(i) – 9b(vi) occurs in any jurisdiction other than Scotland.
- c. In the event of termination of this Contract you shall pay to us all amounts which remain outstanding for Services performed or Goods delivered by us under this Contract within 10 Business Days of this Contract terminating.

10. Assignment

We shall be entitled to assign, transfer or sub-contract any of our rights or obligations under this Contract. You shall not assign, transfer or sub-contract any of your rights or obligations under this Contract or purport to do so unless you have obtained our prior written consent.

11. Dispute Resolution

Should any dispute arise between us and you, the parties will attempt to resolve the dispute in good faith. If the parties are unable to resolve any such dispute between them, either party may request that the parties seek to resolve the dispute through mediation using the services of the Centre for Dispute Resolution to facilitate the mediation process but this shall not prejudice a party's right to raise court or other proceedings.

12. Entire Agreement

This Contract and any other document referred to herein as being applicable contains the entire agreement of the parties with respect to the subject matter of this Contract and supersedes all prior agreements and arrangements whether written or oral between the parties with respect to the subject matter of this Contract. Nothing in this Condition 12 shall have effect to exclude the liability of either party for fraud or fraudulent misrepresentation.

13. Severability

If any provision of this Contract is held by the appropriate court or other competent authority to be void or unenforceable in whole or in part this Contract shall continue to be valid as to the other provisions of it and the remainder of the affected provision.

14. Governing Law

This Contract shall be governed by and construed in accordance with the law of Scotland and the parties hereby submit to the non-exclusive jurisdiction of the Scottish courts.

biobest

Contact Us

Address

Biobest Laboratories Ltd
6 Charles Darwin House
The Edinburgh Technopole
Milton Bridge
Nr Penicuik
EH26 0PY

Telephone

Tel: +44 (0)131 440 2628 (Edinburgh Office)
+44(0)1856 878 293 (Orkney Office)
Fax: +44 (0)131 440 9587

Email

General: enquiry@biobest.co.uk

Website

www.biobest.co.uk

Follow Us

-  [@biobestlaboratories](#) - [@hihealthherdcare](#)
-  [@biobest_labs](#) - [@hhherdcare](#) - [@hhflockcare](#)
-  [Biobest Laboratories Ltd](#)
-  [Biobest Laboratories](#)
-  [@biobestlaboratories](#)